



THE NATIONAL CENTER ON
Program Management
and Fiscal Operations

Tying the Knot

Early Head Start and Child Care Partnerships: A Systems Approach

Birth to Three Institute
June 29, 2014

Presenters

Christopher Barnes

Patricia Fahey

Sherrie Rudick



Agenda

- Articulate issues related to developing successful EHS/child care partnerships from a systems perspective
- Discuss lessons learned from previous research
- Use a case study to identify the issues related to their own potential or incipient partnerships
- Provide tools and resources to help participants apply the systems approach and lessons learned to their own situations.



This presentation will not provide assistance with the Funding Opportunity Announcement (FOA). No information about the FOA will be given, and no questions about the FOA will be answered.





What Is a Partnership?

“A collaborative relationship between entities to work toward shared objectives through a mutually agreed division of labor.”

World Bank, Partnerships Group, Strategy and Resources Management, “Partnership for Development: Proposed Actions for the World Bank: (discussion paper, May 20, 1998). P. 5

in Partnerships: Frameworks for Working Together, Compassion Fund National Resource Center, operated by Dare Mighty Things, In., in the performance of Health and Human Services Contract HHSP23320082912YC. P. 4

Why Partner?

Pros for Head Start

- Serve more children and families
- Exchange knowledge, expertise, and resources
- Offer families more choices
- Extend hours and length of year

Pros for partners

- Provide comprehensive services to more children
- Exchange knowledge, expertise, and resources



Poll

With whom do you partner?

- Child care in my home organization
- Child care with an external organization
- Family child care homes
- School district/Pre-K
- None now: considering for future





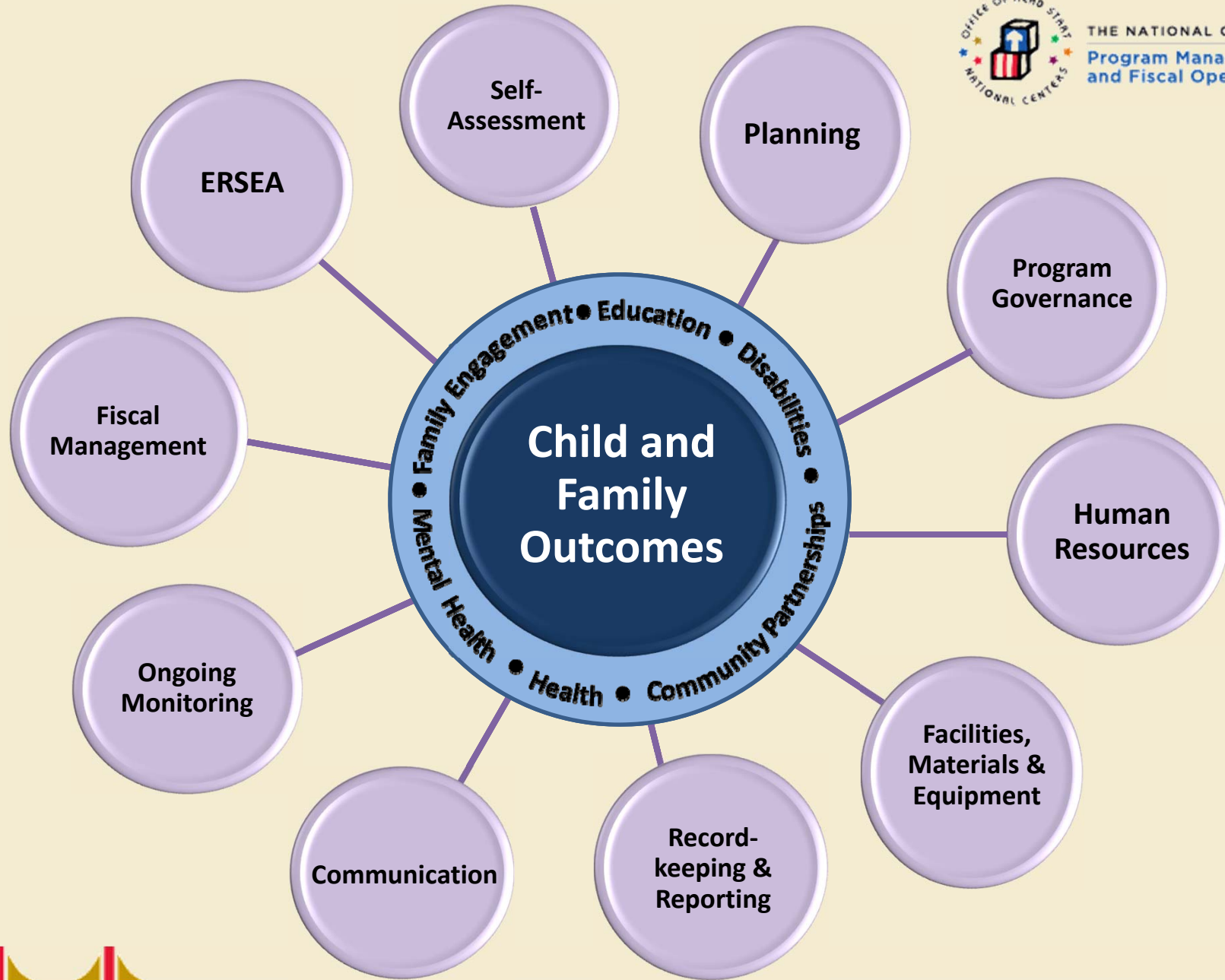
THE NATIONAL CENTER ON
Program Management
and Fiscal Operations

Warm-Up

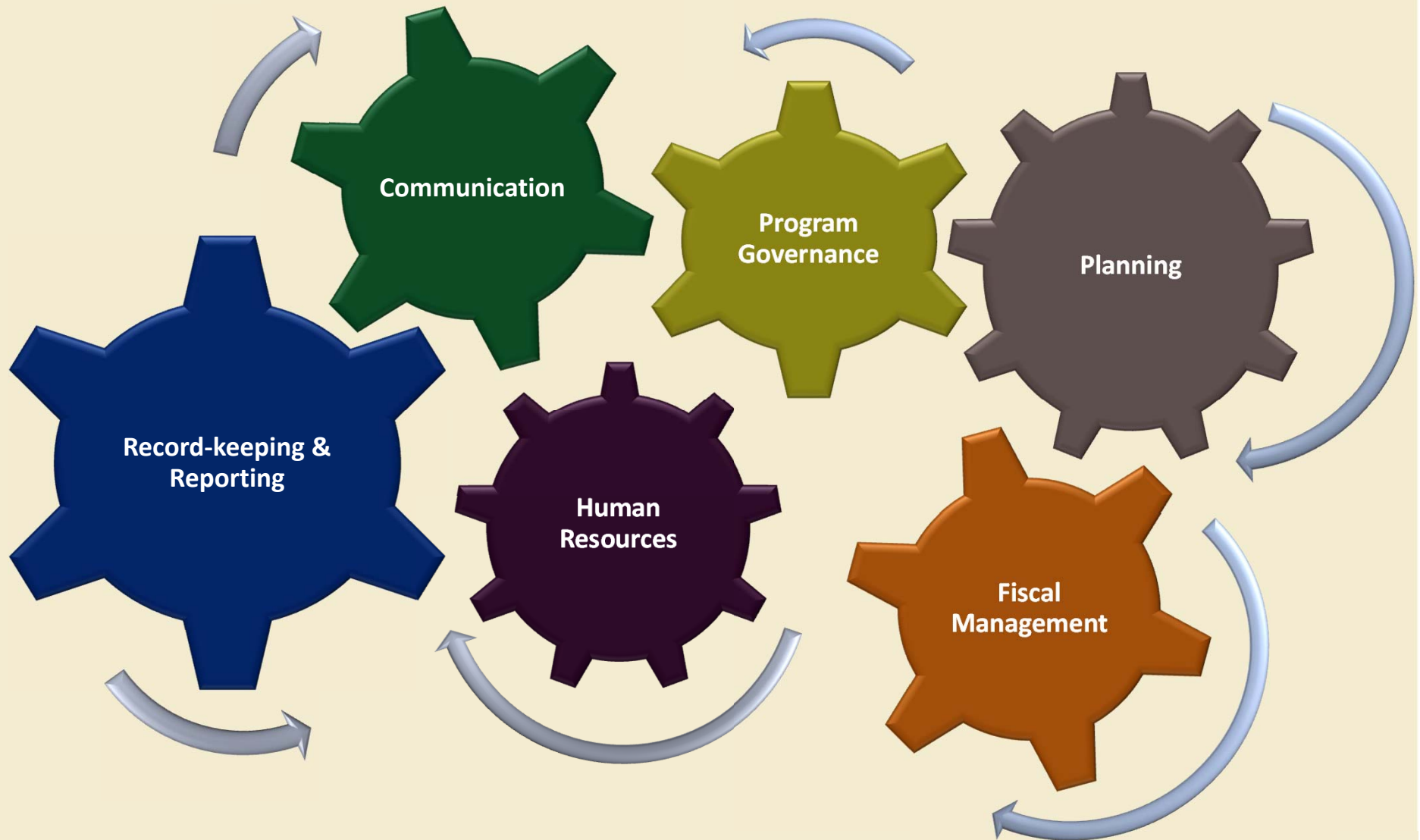


The background of the slide is a vibrant blue with a pattern of concentric, glowing ripples that emanate from the center, creating a sense of depth and movement. The ripples are more pronounced in the center and fade towards the edges.

Impact of a New Initiative



Systems Are Linked

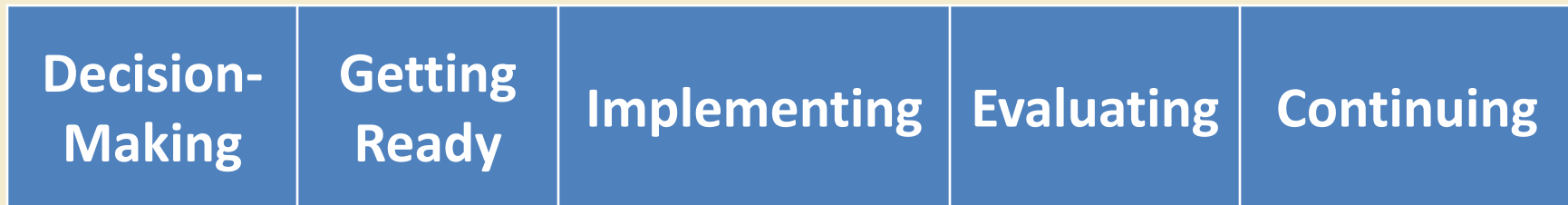


Systems Are Linked





Stages of Partnerships



Stages and Systems



	Decision-Making	Getting Ready	Implementing	Evaluating	Continuing
Planning					
Fiscal Management					
Governance					
HR					
R&R					
OGM					
Facilities					
Communication					
Self-Assessment					
ERSEA					



Decision-Making aka: The Dating Game

Single: Recognizing a need

Searching: Considering the possibilities

Courtship: Exploring the attraction

Bonding: Coming to agreement

Commitment: Tying the knot

Dating Game Activity

1. Read the scenario with your assigned organization (USA or Casa de Ninos) in mind
2. Identify the strengths and needs of your assigned organization
3. Consider the attractiveness of the other organization. Decide:
 - Strengths and challenges they bring to the table
 - Questions you will ask them during courtship

Partnership Models

- Partner provides classroom services/EHS provides health, nutrition, family services, etc.
- Partner provides all services
- EHS provides classroom services, partner provides other (e.g., family, health) services
- Partners share staff, e.g., classroom team includes a teacher from both partners
- Partners provide services to extend the day
- Other?

What the Research Says About \$

\$ ⇒ Success

Process for review essential

*Schilder, D. (2014) Child Care/Head Start Partnership Snapshot: What the Research Says About Establishing and Sustaining Partnership, Waltham, MA, Education Development Center, Inc.

Money Used For...

- Professional Development
- Salaries and benefits
- Curriculum materials and enhancements
- Equipment
- Comprehensive services
- Teacher supports
- Training
- Monitoring



Getting Ready Activity

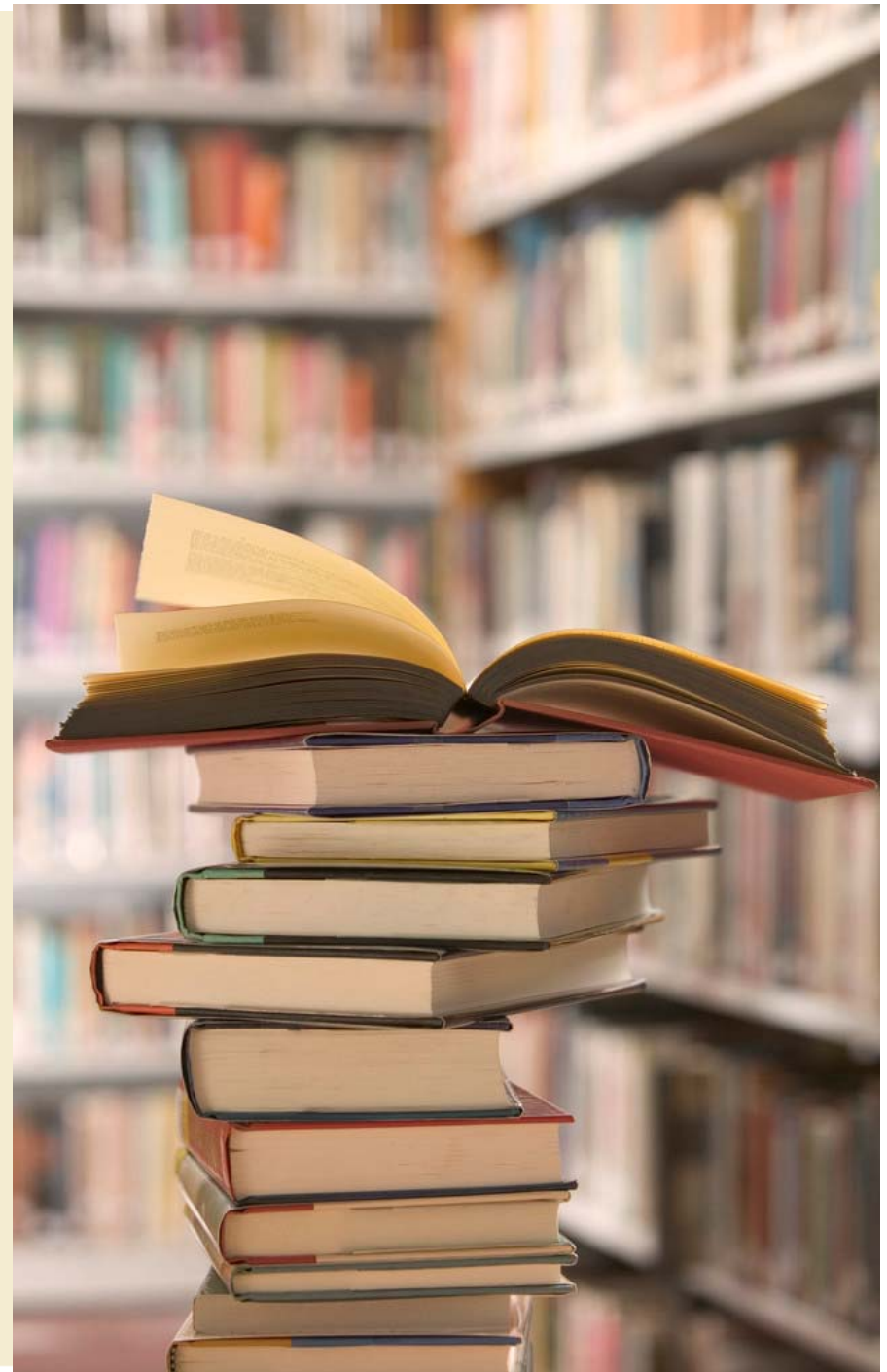
1. Read the Getting Ready update
2. Review the budget items that the partners have agreed to cover
3. Think about other cost items that the partners should discuss and build into their agreement.

Successful Partnerships

What the Research Says*

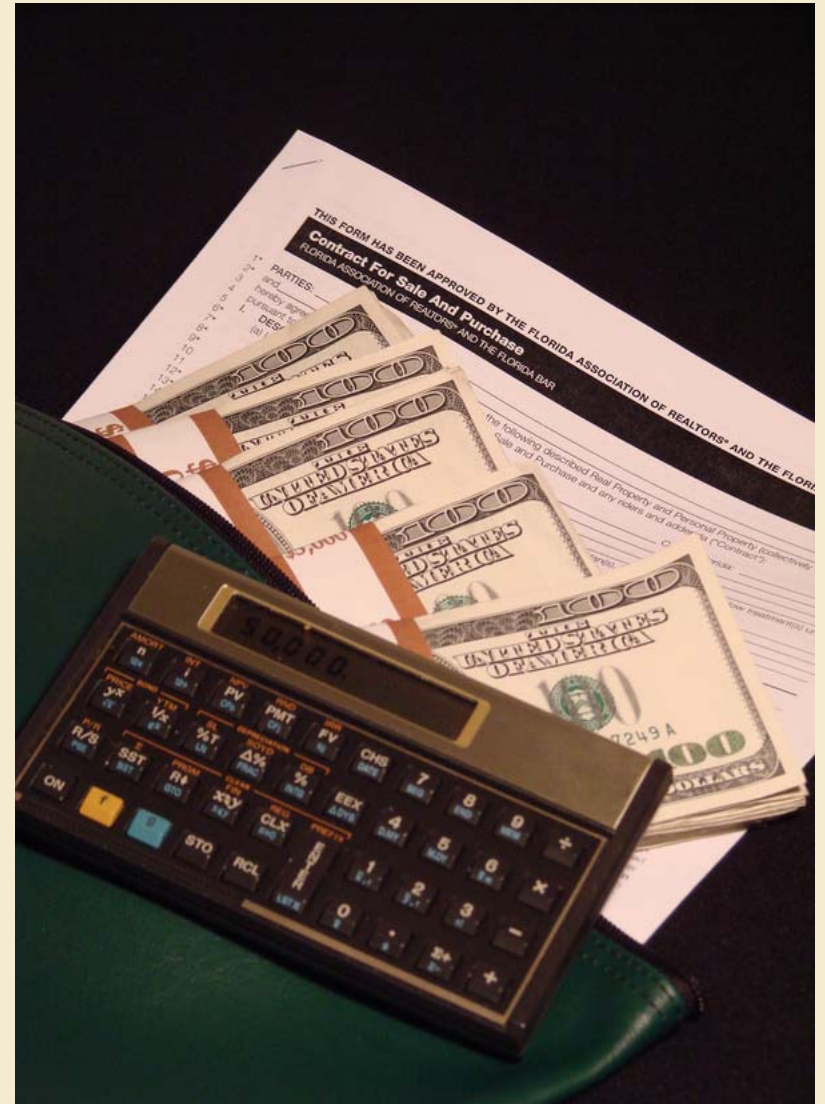
- Average 6 months to establish and met at least 3 times before signing
- Have written agreements
- Processes and procedures
- Communication is key

*Schilder, D. (2014) Child Care/Head Start Partnership Snapshot: What the Research Says About Establishing and Sustaining Partnership, Waltham, MA, Education Development Center, Inc.



Written Agreements

- Contract
- Policies on roles and responsibilities
- Goals and objectives that articulate what is to be achieved annually
- Plans describing financial arrangements
- Procedures for communication
- Agreement about curriculum



*Schilder, D. (2014) Child Care/Head Start Partnership Snapshot: What the Research Says About Establishing and Sustaining Partnership, Waltham, MA, Education Development Center, Inc.

Processes and Agreements

- Shared philosophy
- Orientation to HS program and regulations
- Conflict-resolution process
- Prepare staff for new responsibilities
- Involve all staff in all phases
- Keep children enrolled if lose subsidy eligibility or state-funded HS eligibility
- Procedures to manage finances

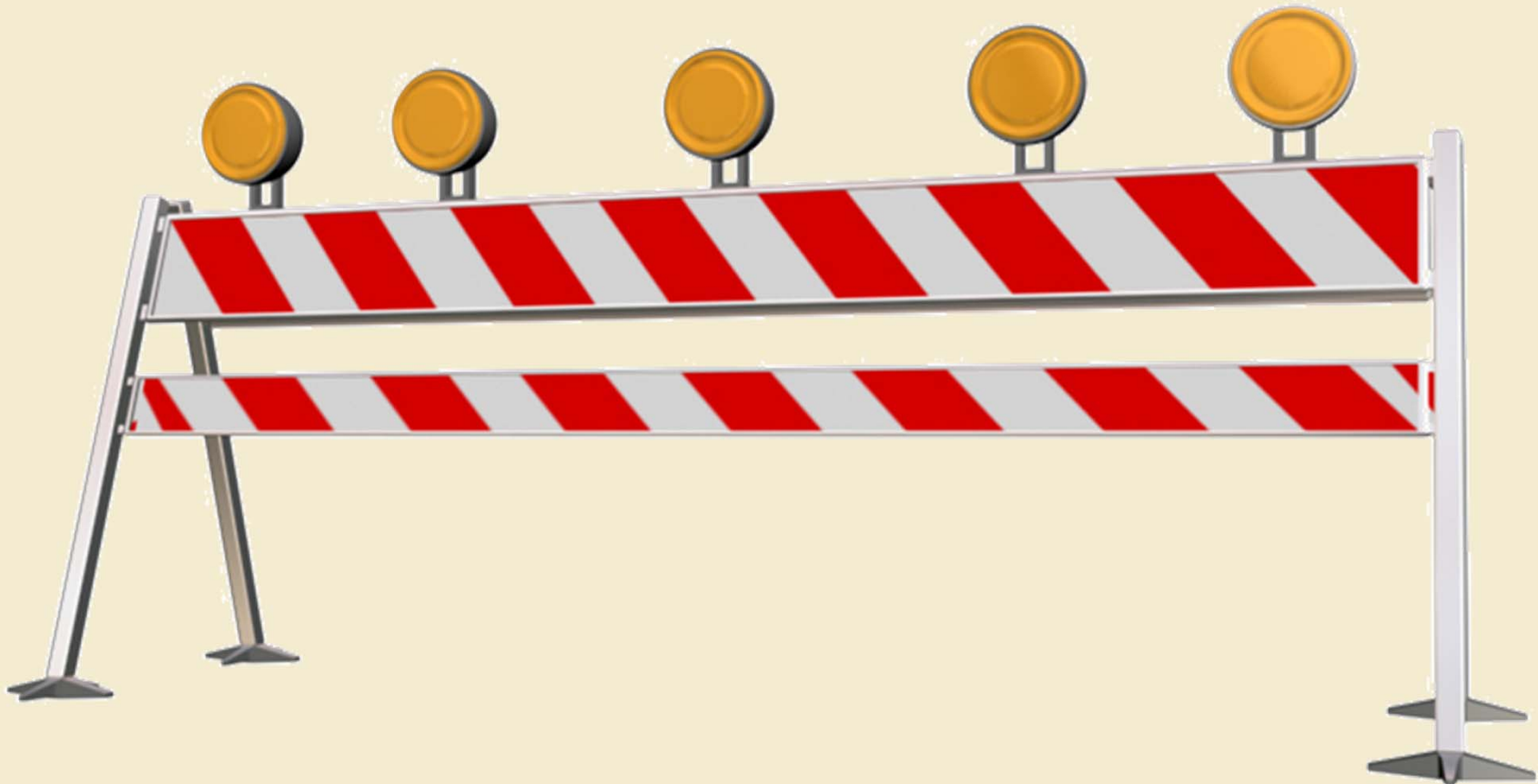
Communication

- Feeling that each organization is a full partner
- Feeling that each partner's voice is heard
- Partners can call each other when need to
- Good within each organization
- Good across organizations
- Mutual respect among individuals
- Respect for each partner's organization



*Schilder, D. (2014) Child Care/Head Start Partnership Snapshot: What the Research Says About Establishing and Sustaining Partnership, Waltham, MA, Education Development Center, Inc.

Overcoming Barriers to Successful Implementation



Barrier and Solutions

Barriers

1. Discussion barriers to partnerships that you have encountered in their work or can envision for future partnerships
2. Record on chart paper
3. Swap chart paper with a near-by table or group.

Solutions

1. Brainstorm suggestions for preventing or overcoming barriers on the chart paper
2. Record in solutions column

The background of the slide is a vibrant blue with a pattern of concentric, glowing ripples that resemble water droplets or a stone thrown into a pond. The ripples are most prominent in the center and fade slightly towards the edges, creating a sense of depth and movement. The overall color palette is various shades of blue, from deep cerulean to bright cyan.

**Evaluating
Partnerships:
The Ripples**

Everybody Benefits

- Children
- Families
- Both programs
- The community





Questions and Reflections



Thank You!!

1-855-PMFOOHS
(1-855-763-6647)

PMFOinfo@edc.org